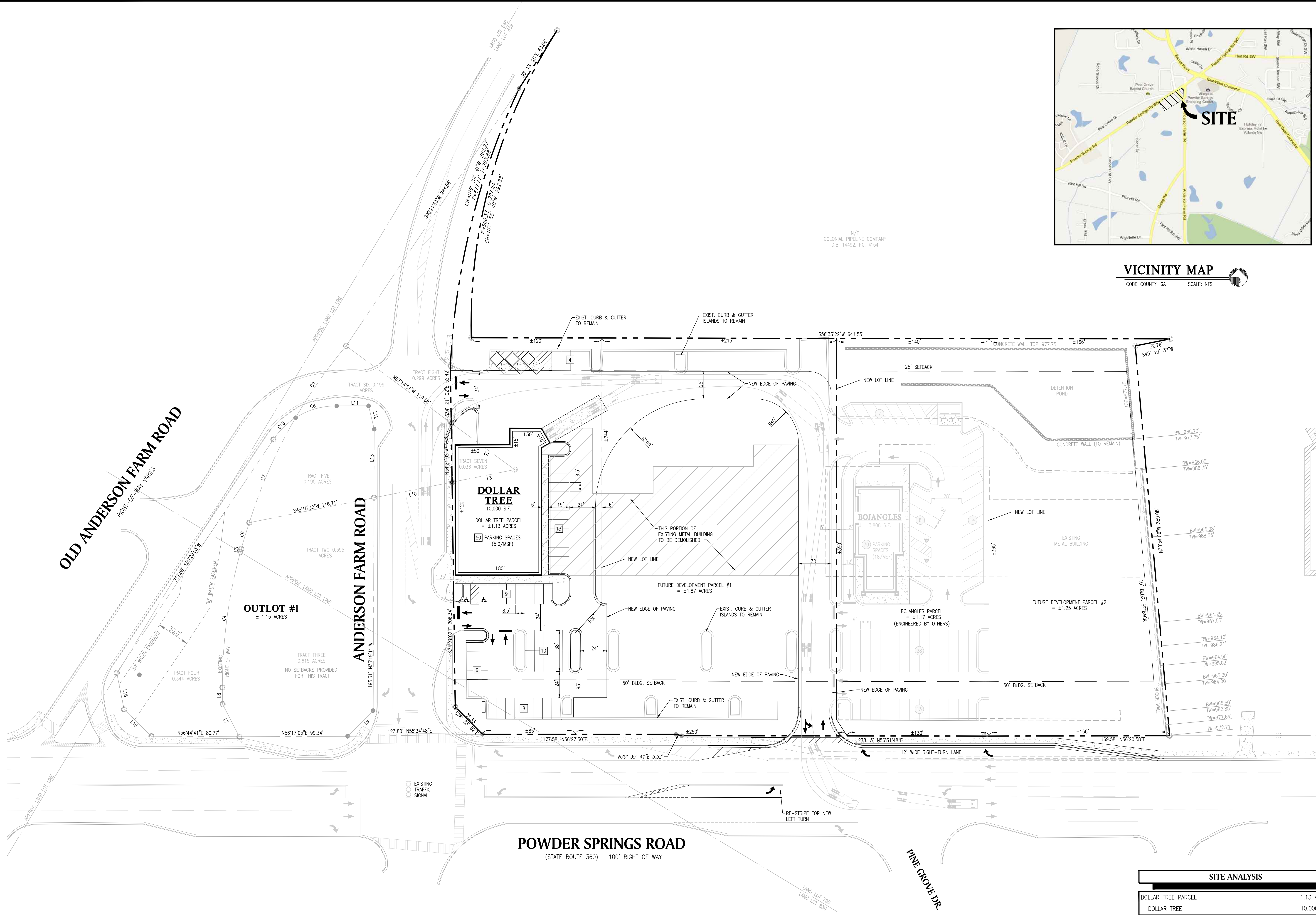


C:\3013\301324\1 Prelim\301324p11.dwg, 08/20/15 12:58:15 PM, 0.000 x 2.000 INCHES, SOURCE: PLOTTER: HP TO PLOT, MICHAEL MEDINA, 08/20/15 12:58:15 PM



VICINITY MAP  
COBB COUNTY, GA SCALE: NTS

N/E  
COLONIAL PIPELINE COMPANY  
D.B. 14492, PG. 4154

LAND PLANNERS  
ENGINEERS • SURVEYORS  
TRANSPORTATION  
LANDSCAPE ARCHITECTS  
85-A MILL STREET  
SUITE 200  
ROSWELL, GEORGIA 30075  
VOICE 770.650.7685  
FAX 770.650.7684  
www.paulsonmitchell.com

**PAULSON MITCHELL**  
INCORPORATED

PROJECT:

**POWDER SPRINGS  
PAVILION**

LAND LOT 19  
DISTRICT 790 & 839,  
COBB COUNTY, GEORGIA

FOR:

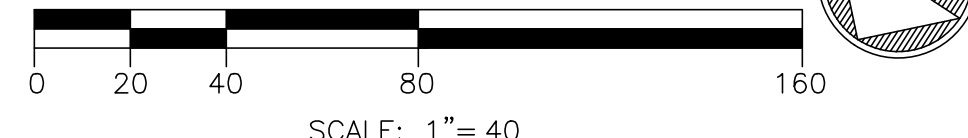
**COLUMBIA  
PROPERTIES, INC.**

1355 TERRELL MILL RD  
BUILDING 1478 SUITE 200  
MARIETTA, GA 30067

REVISIONS

NO.	DATE	DESCRIPTION

**PRELIMINARY SITE PLAN**



SITE ANALYSIS	
DOLLAR TREE PARCEL	± 1.13 ACRES
DOLLAR TREE	10,000 S.F.
PARKING PROVIDED	50 SPACES
PARKING RATIO	5.0 SPACES / MSF
FUTURE DEVELOPMENT PARCEL #1	± 1.87 ACRES
BOJANGLES PARCEL	± 1.17 ACRES
FUTURE DEVELOPMENT PARCEL #2	± 1.25 ACRES
OUTLOT #1	± 1.15 ACRES
TOTAL LAND AREA	± 6.56 ACRES

2013124p11.dwg 08.20.15

PRELIMINARY  
SITE PLAN

SHEET **PS-11**